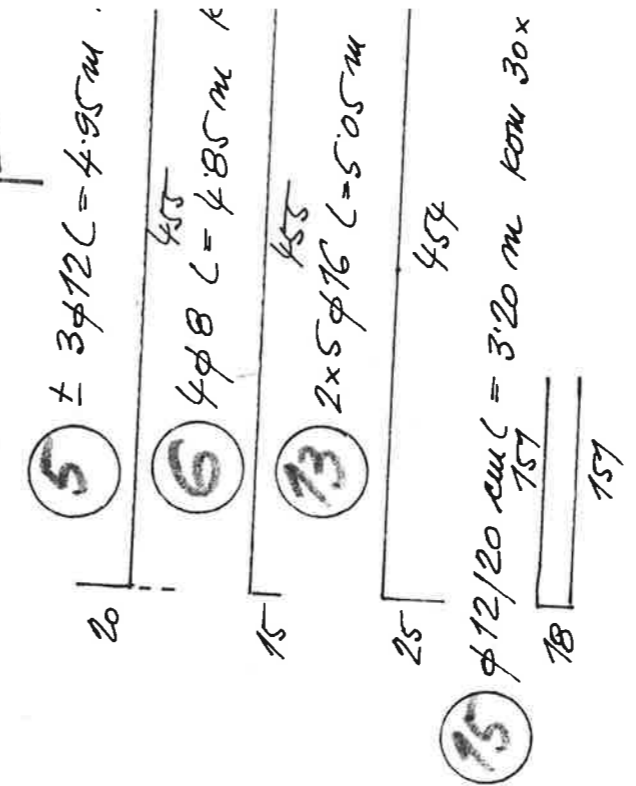
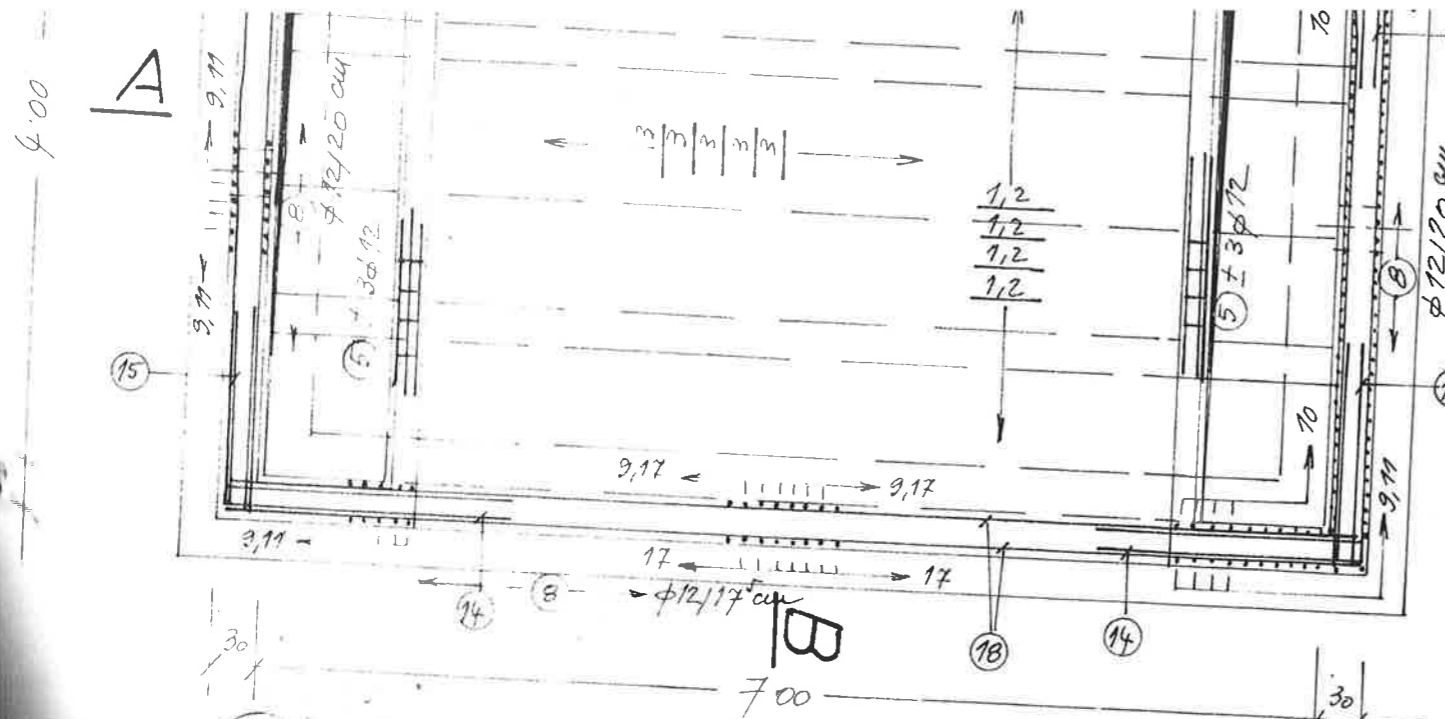
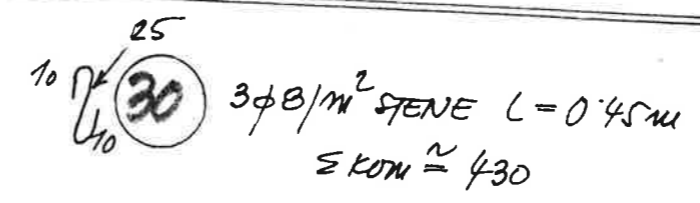


RA 400/5



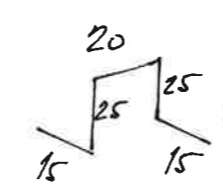
- 14 $\phi 12/20$ cm $L = 4.20$ m kom $30 \times 4 = 120$
- 18 $2 \phi 10/10$ cm $L = 8.05$ m kom $120 \times 2 = 240$
- 19 $\phi 8/20$ cm $L = 7.95$ m kom 64
- 22 $2 \times 3 \phi 16$ $L = 8.10$ m kom $6 \times 2 = 12$
- 23 $4 \phi 16$ $L = 2.00$ m kom $4 \times 4 = 16$

POVEZOVANJE NOTRANJE IN ZUNANJE ARMATURE V STENAH



30 $3 \phi 8/m^2$ STENE $L = 0.45$ m
 Σ KOM ≈ 430

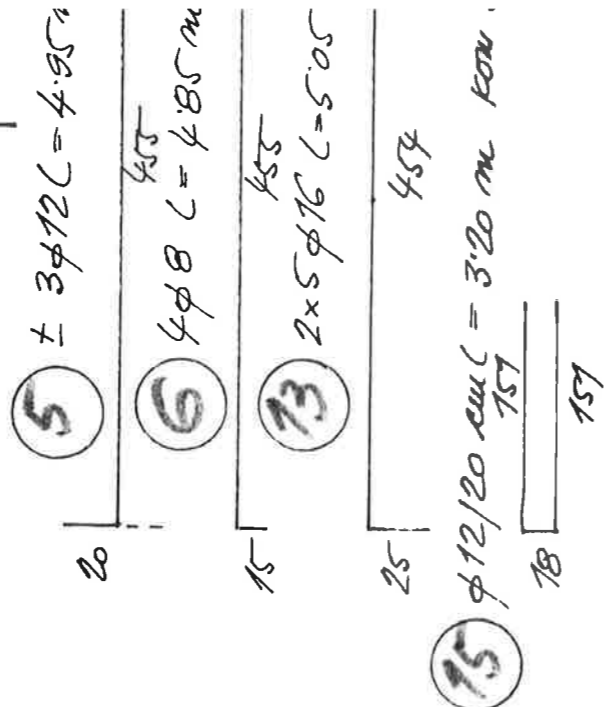
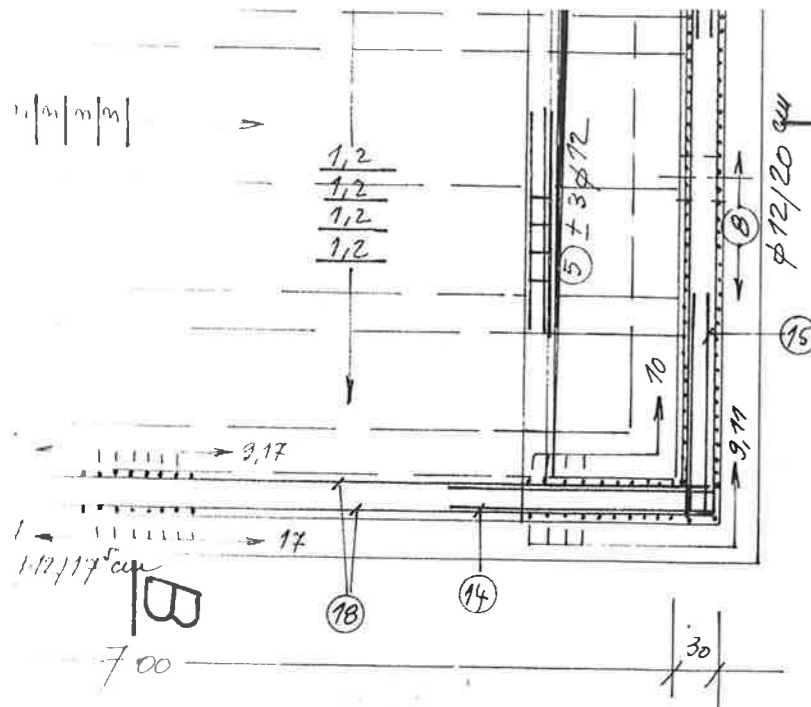
PODPIRANJE ZGOBJENE ARMATURE V TALNI PLOŠČI



31 $2 \phi 14/m^2$ TALNE PLOŠČE
 $L = 1.00$ m kom 80

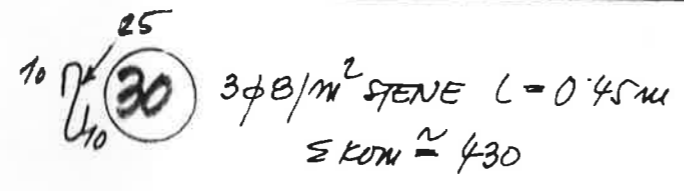
ozn	ϕ	L(m')	kom	$\phi 8$
1	8	5.65	24	135.60
2	8	6.15	24	147.60
3	8	4.85	50	242.50
4	8	1.65	40	66.00
5	12	4.95	12	
6	8	4.85	8	38.80
7	10	2.65	80	
8	12	5.40	120	
9	12	1.20	228	
10	12	6.75	124	
11	12	6.95	132	
12	10	5.05	248	
13	16	5.05	20	
14	12	4.20	120	
15	12	3.20	120	
16	14	2.65	112	
17	12	6.80	200	
18	10	8.05	240	
19	14	2.40	48	
20	12	5.60	164	
21	10	8.60	104	
22	8	7.95	64	508.80
23	16	8.10	12	
24	8	1.80	70	426.00
25	8	2.10	70	147.00
26	8	3.00	35	405.00
27	8	3.30	35	115.50
28	8	2.20	35	77.00
29	8	2.00	35	70.00
30	8	0.45	430	193.50
31	14	1.00	80	
32	12	2.00	16	
			$\Sigma L(m')$	1973.30
			KG	4290.00
				799
				2715

$\Sigma KG = 10$

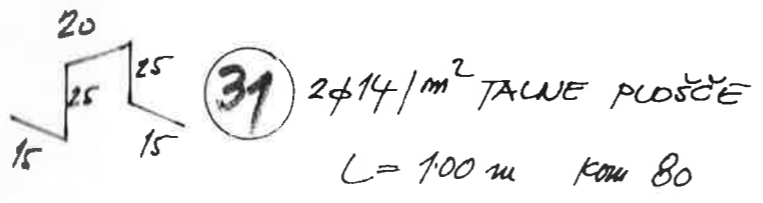


$m \text{ kom } 30 \times 4 = 120$
 $\phi 10 \text{ cu } L = 8.05 \text{ m } \text{ kom } 120 \times 2 = 240$
 $\phi 20 \text{ cu } L = 7.95 \text{ m } \text{ kom } 64$
 $3\phi 16 \text{ L} = 8.10 \text{ m } \text{ kom } 6 \times 2 = 12$
 $\text{kom } 4 \times 4 = 16$

POVEZOVANJE NOTRANJE IN ZUNANJE ARMATURE V STENAH



PODPIRANJE ZGORNJE ARMATURE V TALNI PLOŠČI



STV	φ	L(m)	KOM	φ8	φ10	φ12	φ14	φ16	φ19
1	8	5.65	24	135.60					
2	8	6.15	24	147.60					
3	8	4.85	50	242.50					
4	8	1.65	40	66.00					
5	12	4.95	12			59.40			
6	8	4.85	8	38.80					
7	10	2.65	80		212.00				
8	12	5.40	120			648.00			
9	12	2.20	228			501.60			
10	12	6.75	124			837.00			
11	12	6.95	132			917.40			
12	10	5.05	248		1252.40				
13	16	5.05	20					101.00	
14	12	4.20	120			504.00			
15	12	3.20	120			384.00			
16	14	2.65	112				296.80		
17	12	6.80	200			1360.00			
18	10	8.05	240		1932.00				
19	14	2.40	48				115.20		
20	12	5.60	164			918.40			
21	10	8.60	104		894.40				
22	8	7.95	64	508.80					
23	16	8.10	12					97.20	
24	8	1.80	70	426.00					
25	8	2.10	70	147.00					
26	8	3.00	35	105.00					
27	8	3.30	35	115.50					
28	8	2.20	35	77.00					
29	8	2.00	35	70.00					
30	8	0.45	430	193.50					
31	14	1.00	80				80.00		
32	12	2.00	16			32.00			
Σ L (m)				1973.30	4290.40	6129.80	492.00	198.20	-
KG				799	2715	5384	594	321	-

Σ KG = 10013